



# Tackling Sustainable Development Goal 9: Examining efforts by RENU to build critical national infrastructure

October 26, 2023  
Kampala - Uganda

By

Nebert Ashaba  
[nashaba@renu.ac.ug](mailto:nashaba@renu.ac.ug)

Brian Masiga  
[bmasiga@renu.ac.ug](mailto:bmasiga@renu.ac.ug)



**From Brazil to Uganda: seven new projects  
connecting and supporting communities  
around the world**

## Outline

- A focus on SDGs.
- Kalangala Connect Project.
- The Problem At Hand.
- Internet Service Connectivity Landscape in Uganda.
- Findings, Projected Benefits and Recommendations.
- Future Work and Conclusion.

# A focus on SDGs

- Focus: United Nations (UN) SDGs.
- Africa: The AfricaConnect3 team.
- SDG 9: Resilient infrastructure, inclusive and sustainable industrialization, and innovation.
- Uganda: RENU's Kalangala Connect Project connecting Kalangala islands.



# Kalangala Connect Project



**Project** – Kalangala Connect is examined & this presentation presents findings and recommendations including;

- ✓ Promoting infrastructure sharing between NRENs and commercial ISPs.
- ✓ Adoption of technically and financially sustainable connectivity technologies.
- ✓ Implementation of complementary access solutions.

**End Goal of this investigation:** Provide valuable insights for leveraging NRENs to support global development initiatives through different projects.

Grant Funding

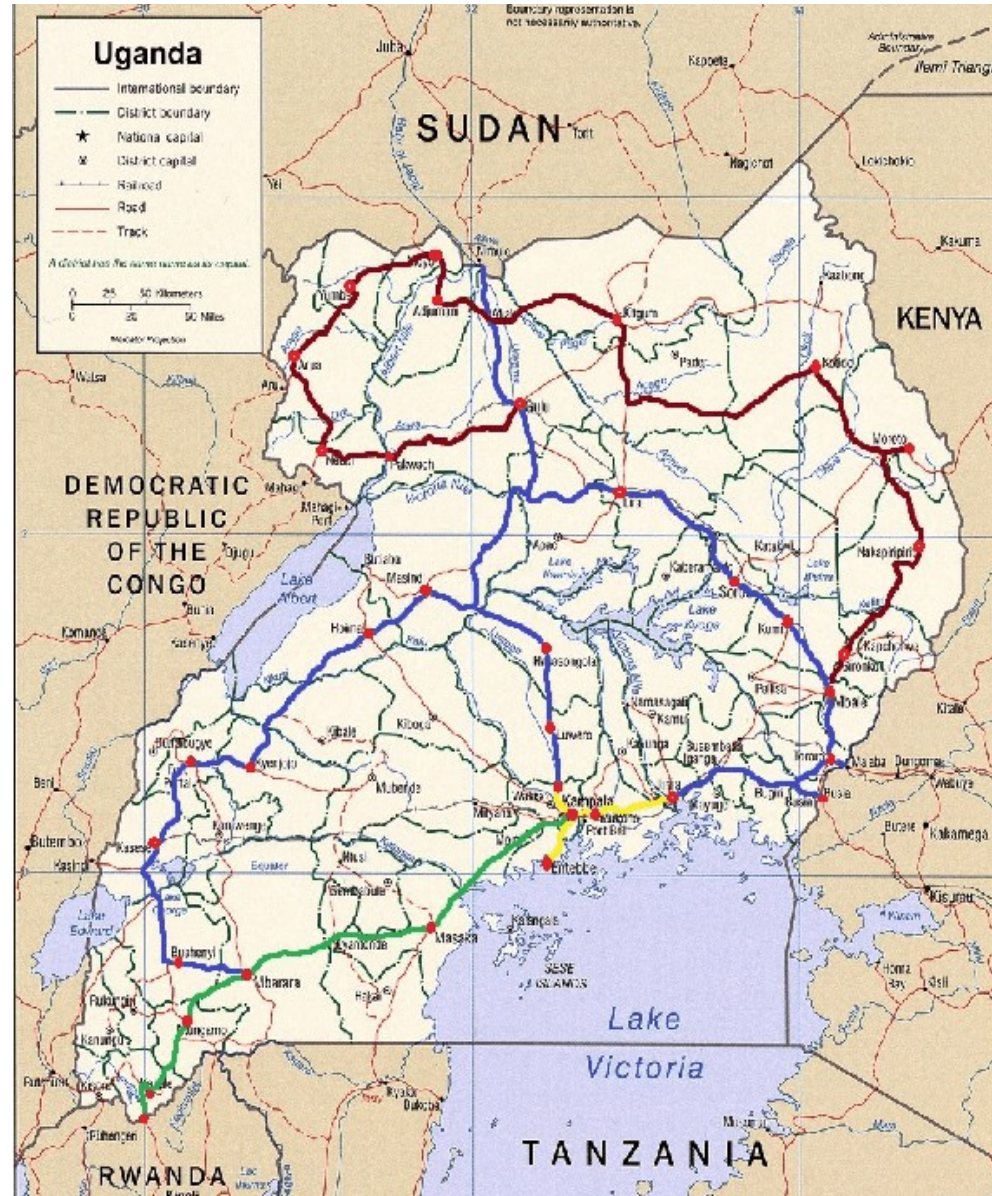


- Aim: Increase network resiliency in communities prone to natural disasters so that these communities are better prepared for and can withstand the effects of natural disasters on Internet connectivity.
- The Resiliency Program: A component of the Foundation's RARE (Resiliency & Responding to Emergencies) Program, which seeks to help communities enhance preparedness and build Internet resiliency when faced with adverse events such as natural disasters.

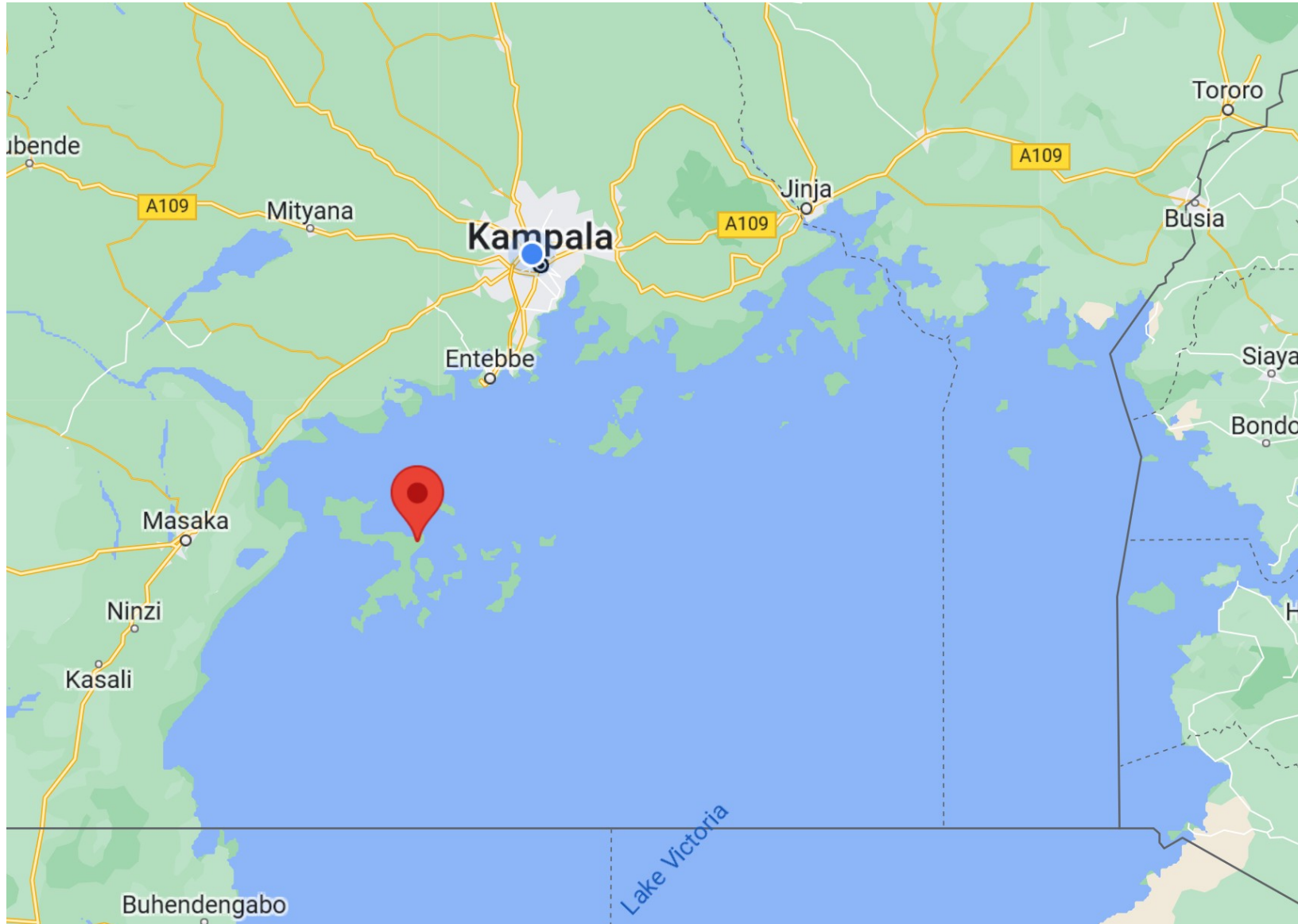




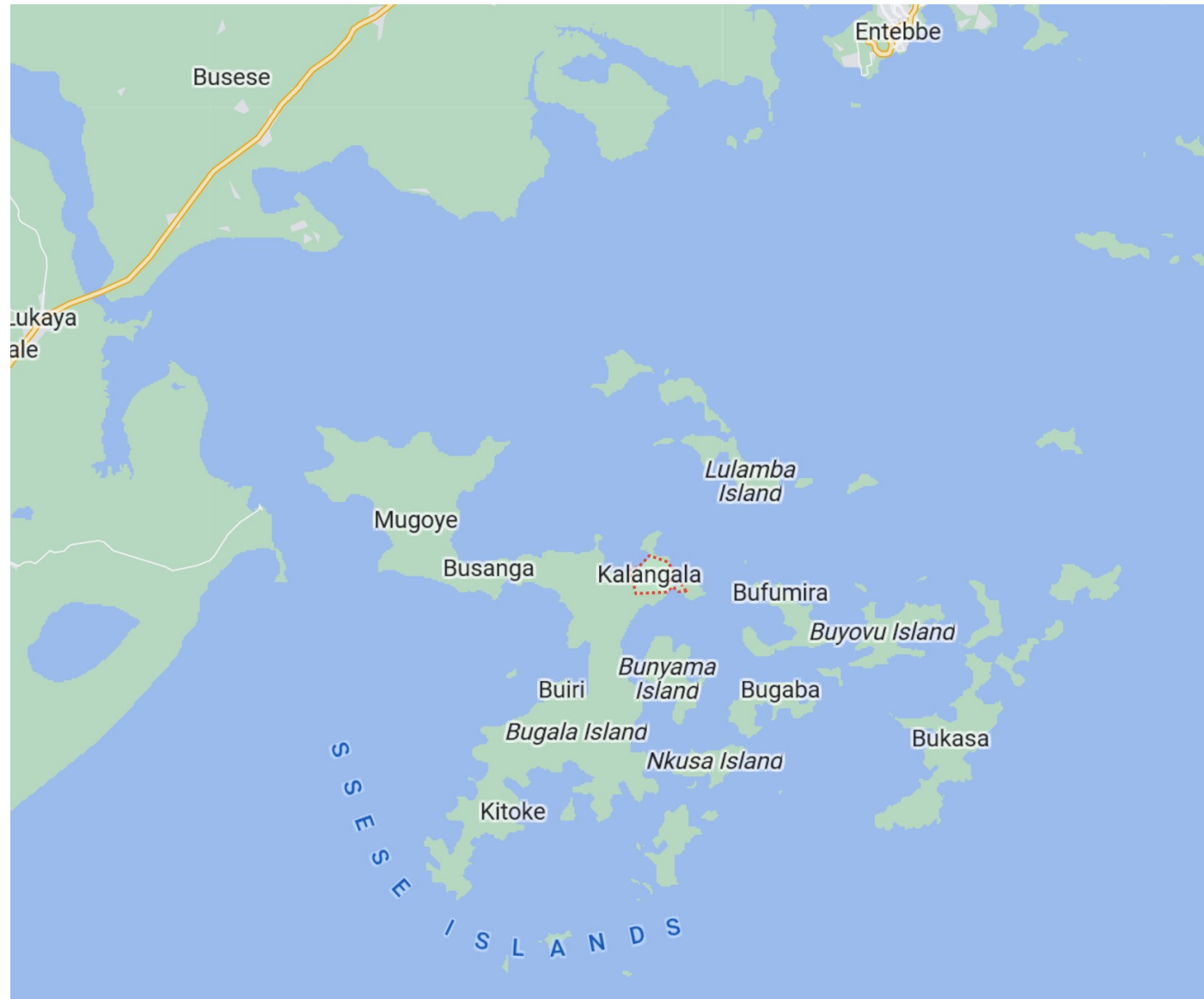
# The Problem At Hand



# The Problem At Hand

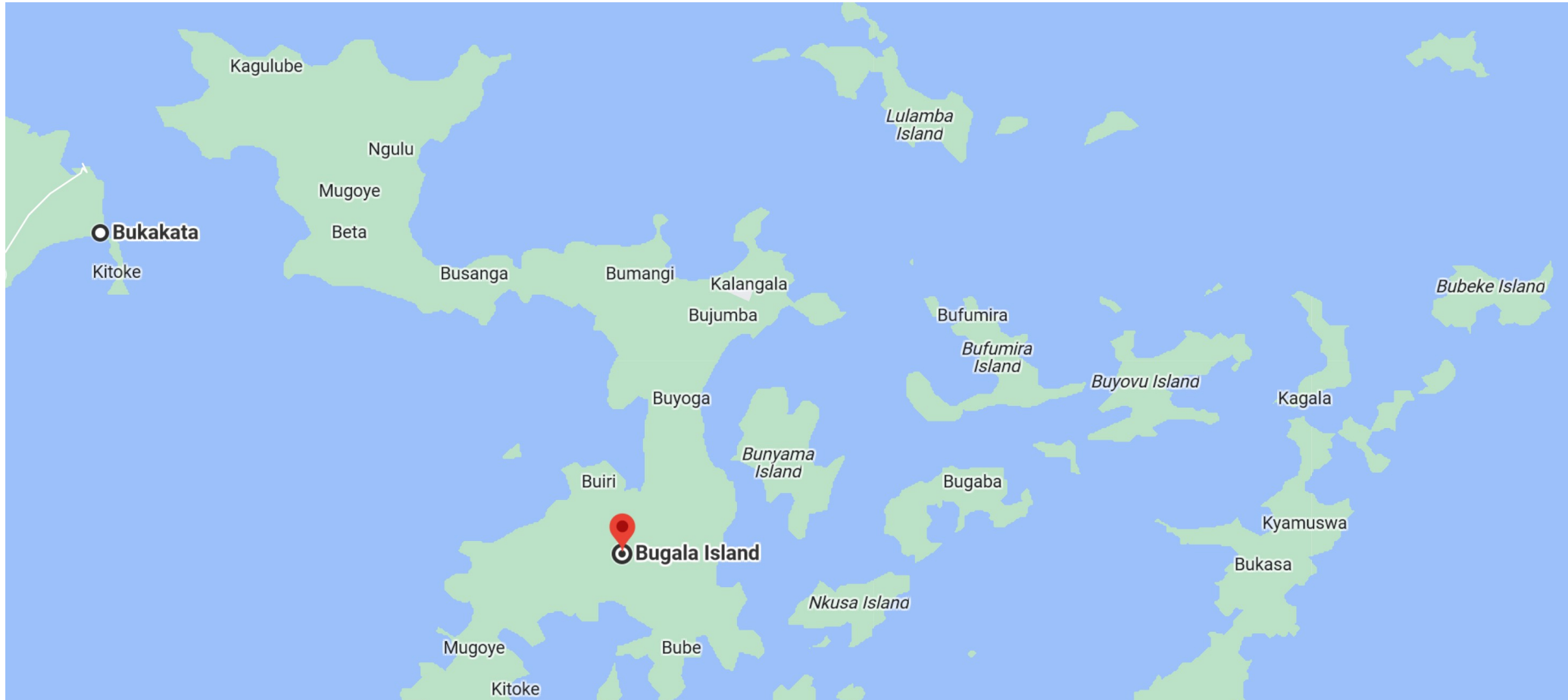


# The Problem At Hand





# The Problem At Hand

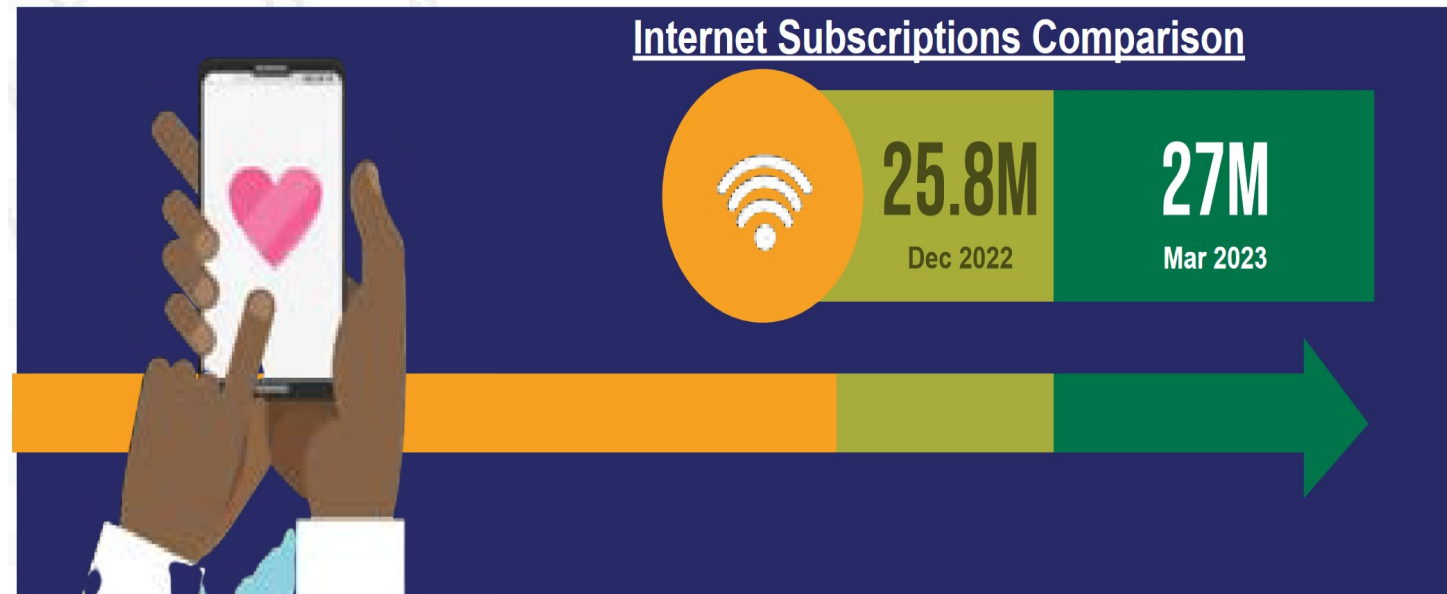


# Kalangala Islands

- District: Kalangala.
- Total Area: 3,514.7 sq mi.
- Islands: 84.
- Population: > 67,200 People.
- Education: 56 institutions.
- Hospitals: 20 health facilities (14 connected by RENU).
- GDP per capita: ~ \$67



# Internet Service Connectivity Landscape in Uganda



- Additional 1.2 million new Internet subscriptions.



# Challenges Hindering Internet Connectivity in Uganda.

- Affordability.
- Geographical Challenges.
- Quality of Service.
- Limited Digital Literacy.

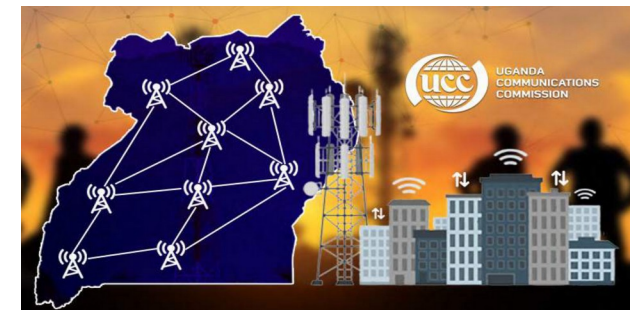
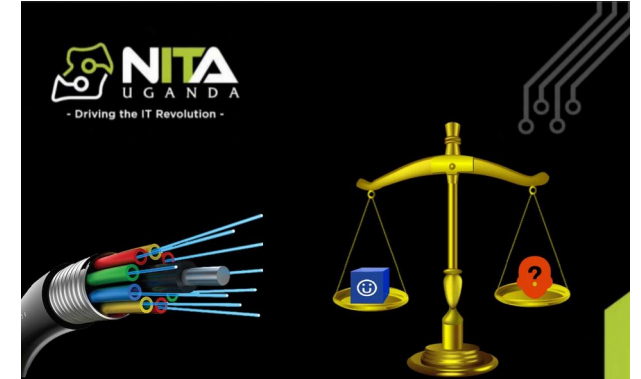




# Current Initiatives to Expand Connectivity



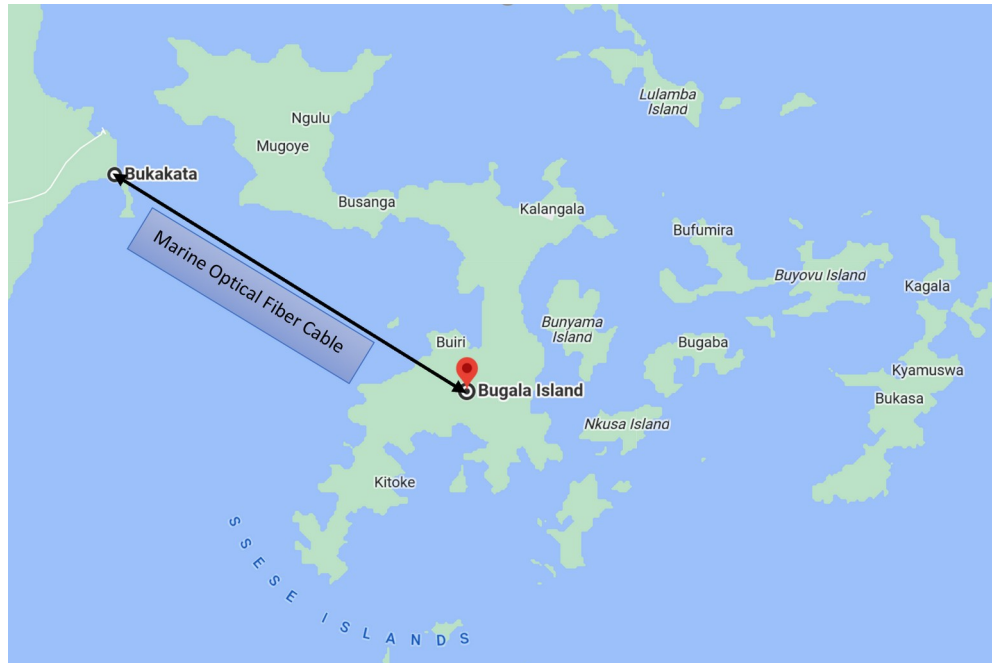
- National Information Infrastructure (NII) Project.
- Uganda Communications Universal Services Access Fund (UCUSAF).
- Kalangala Connect Project.



# Projected Benefits



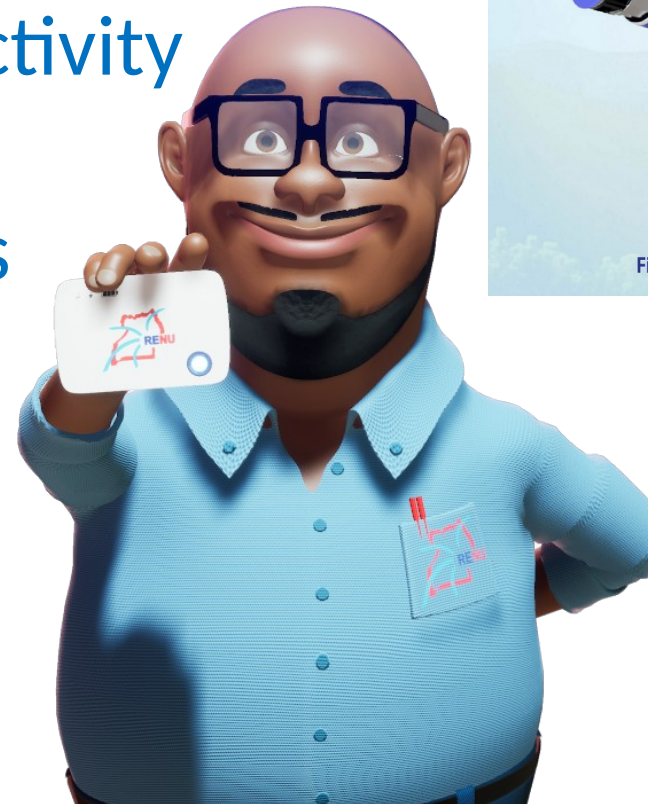
- Easier access to Information and Education materials.
- Enhanced Healthcare Services.
- Economic Opportunities.
- Disaster Preparedness and Response.



# Recommendations



- Infrastructure Sharing.
- Adoption of technically and financially sustainable connectivity technologies.
- Use of complementary access solutions.



# Future Work and Conclusion



Kalangala Connect Project;

- ✓ Currently at inception stage - in a phased manner.

Anticipation;

- ✓ Increase in FTTx deployment– but Involve users!

In a nutshell...

- ✓ Our institutions' collective digital future hinges on how well and how quickly we deliver affordable, accessible, resilient, and reliant digital connectivity.



~End~